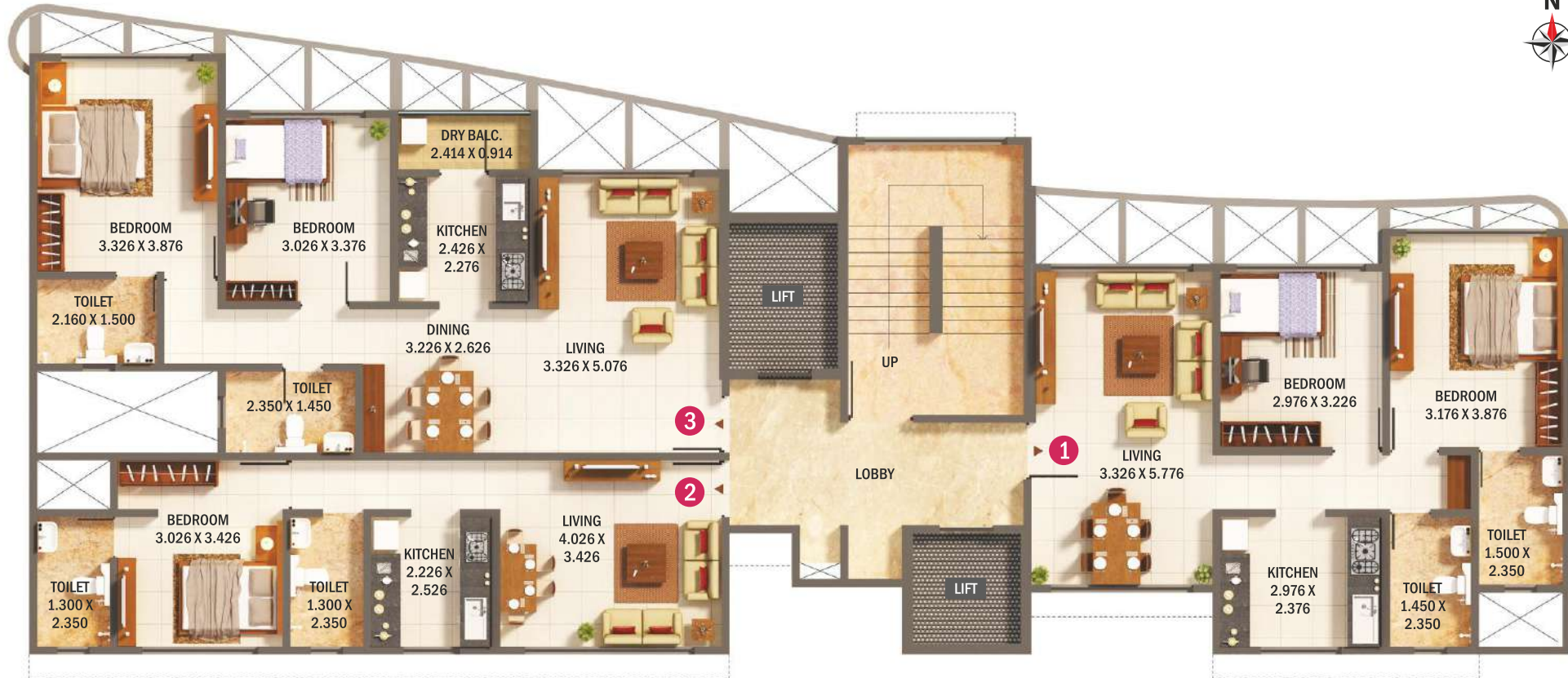


BUILDING - B

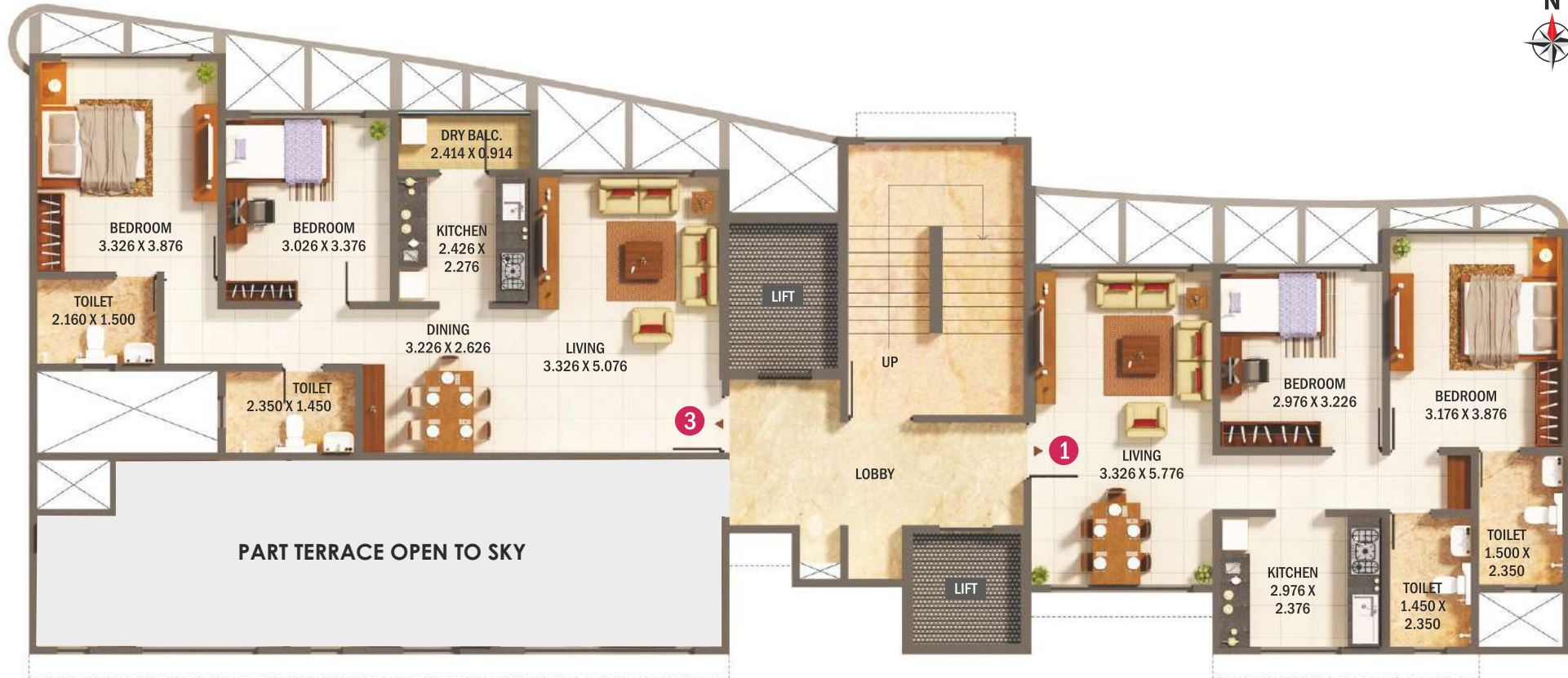
TYPICAL FLOOR PLAN (3th, 4th, 5th, 6th, 8th, 9th, 10th)



All measurements are in sq.mtr. • 1 sq.mtr. = 10.764 sq.ft.

BUILDING - B

11TH FLOOR PLAN



All measurements are in sq.mtr. • 1 sq.mtr. = 10.764 sq.ft.

BUILDING - B • 1 BHK APARTMENT

FLOOR	APARTMENT NO.	TYPE	CARPET
3rd to 6th Floor, 8th to 10th Floor	2	1 BHK	41.50



All measurements are in sq.mtr. • 1 sq.mtr. = 10.764 sq.ft.

BUILDING - B • 2 BHK APARTMENT (Type-1)

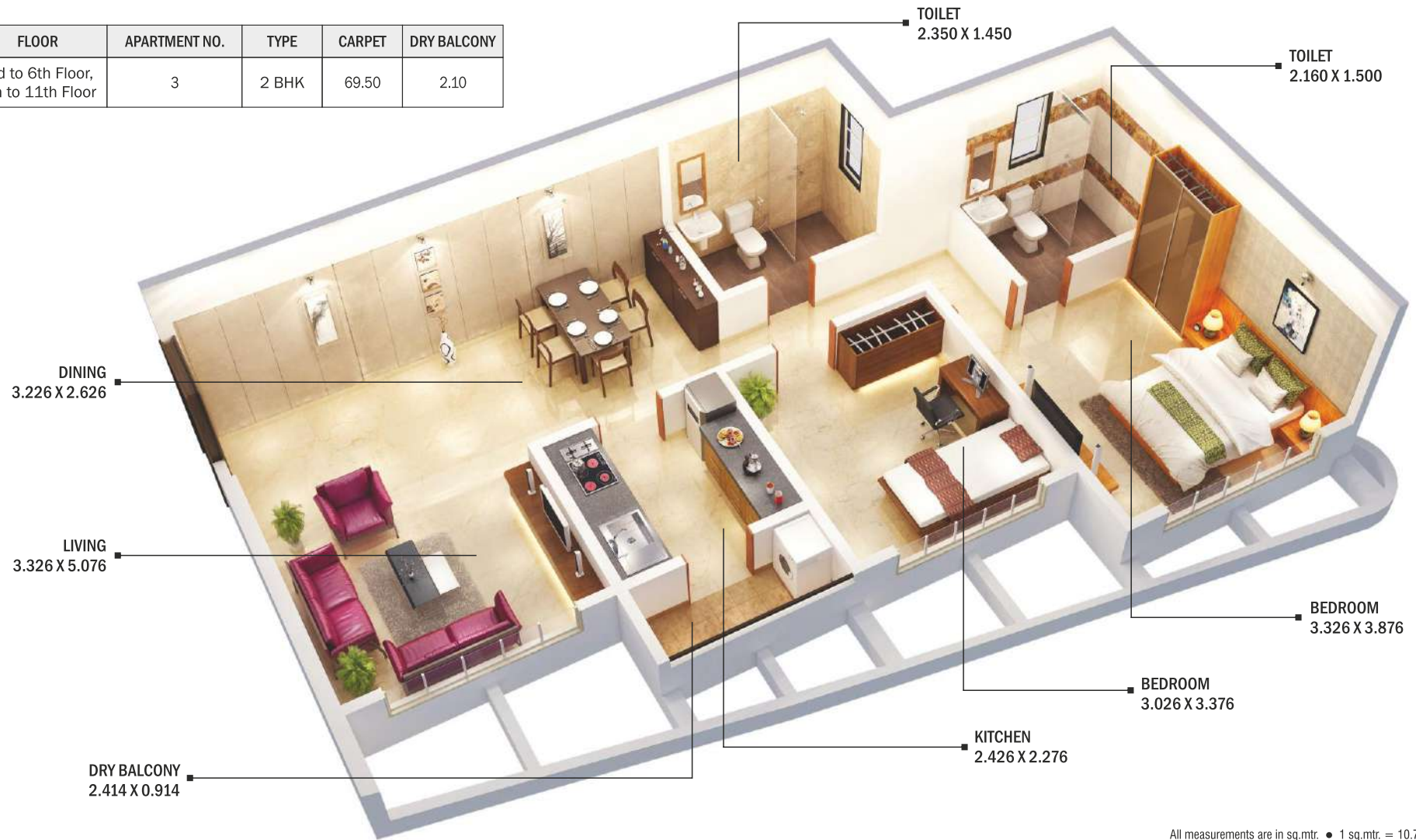
FLOOR	APARTMENT NO.	TYPE	CARPET
1st to 11th Floor	1	2 BHK	64.00



All measurements are in sq.mtr. • 1 sq.mtr. = 10.764 sq.ft.

BUILDING - B • 2 BHK APARTMENT (Type-2)

FLOOR	APARTMENT NO.	TYPE	CARPET	DRY BALCONY
3rd to 6th Floor, 8th to 11th Floor	3	2 BHK	69.50	2.10



All measurements are in sq.mtr. • 1 sq.mtr. = 10.764 sq.ft.