

BUILDING - B

TYPICAL FLOOR PLAN (3th, 4th, 5th, 6th, 8th, 9th, 10th)



Proposed 2 Basements + Ground Floor + 11 Floors
(Currently 2 Basements + Ground Floor + 5 Floors sanctioned)

All measurements are in sq.mtr. • 1 sq.mtr. = 10.764 sq.ft.

BUILDING - B • 1 BHK APARTMENT

FLOOR	APARTMENT NO.	TYPE	CARPET
3rd to 6th Floor, 8th to 11th Floor	2	1 BHK	41.50



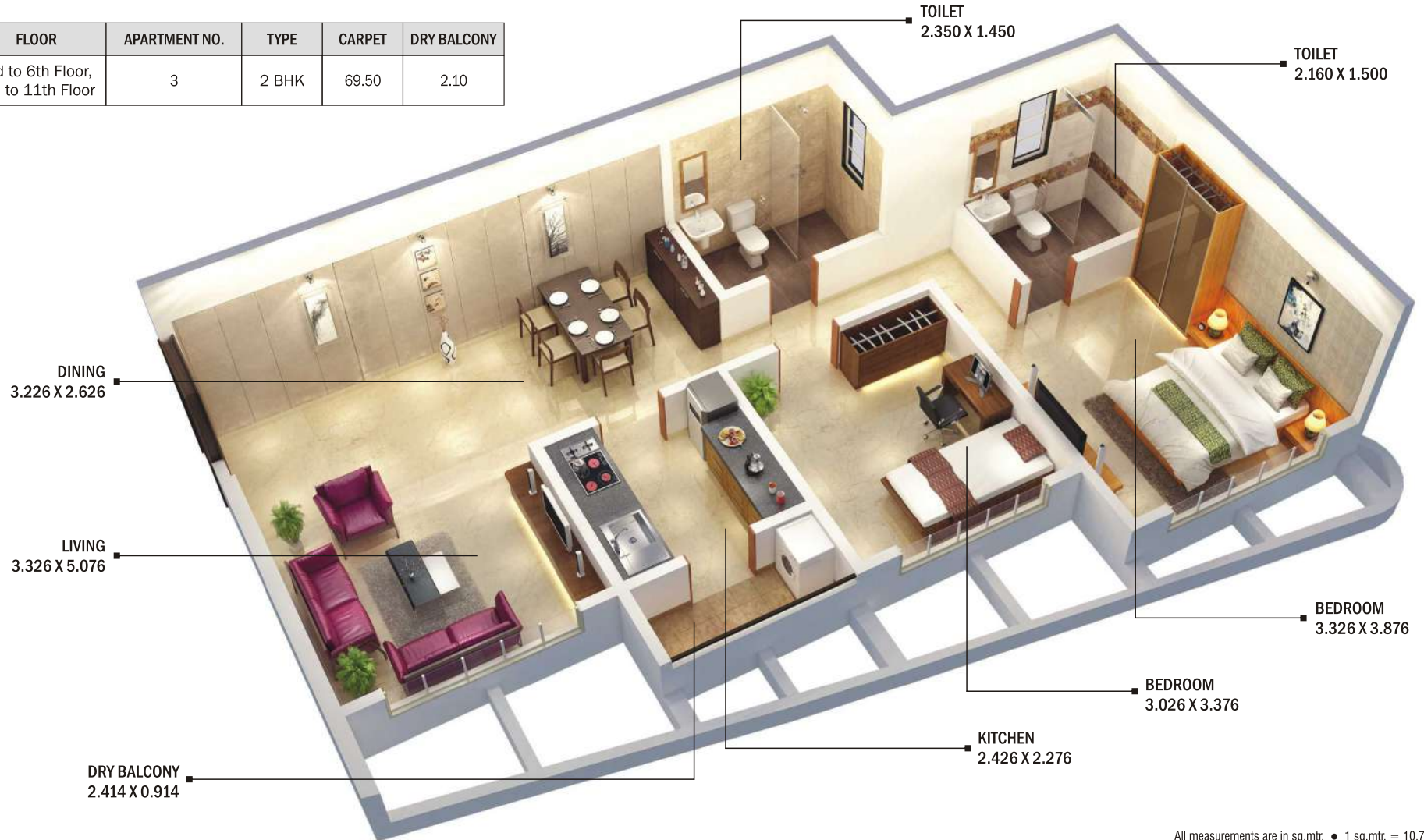
BUILDING - B • 2 BHK APARTMENT (Type-1)

FLOOR	APARTMENT NO.	TYPE	CARPET
1st to 10th Floor	1	2 BHK	64.00



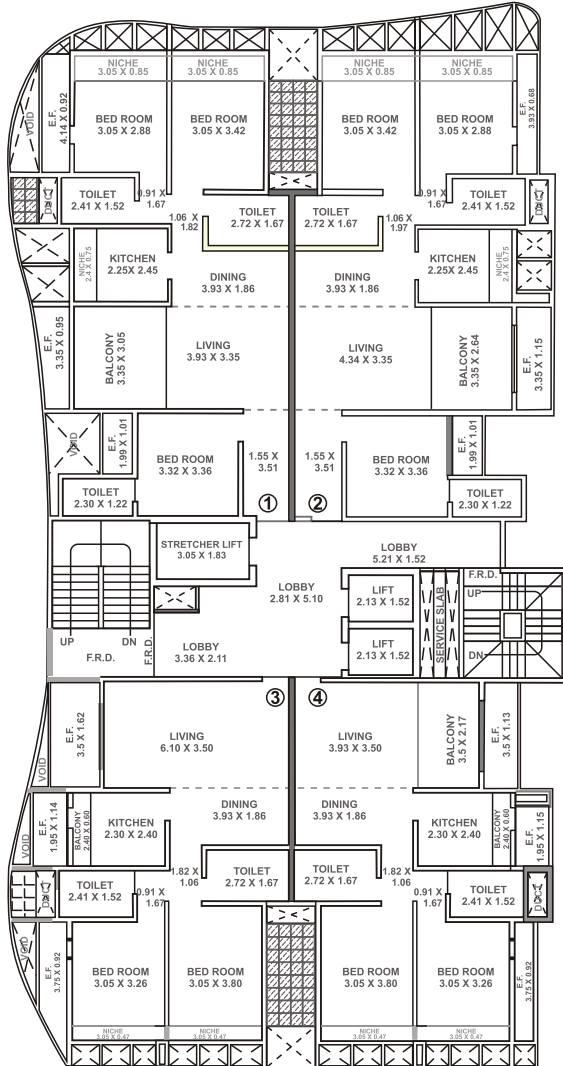
BUILDING - B • 2 BHK APARTMENT (Type-2)

FLOOR	APARTMENT NO.	TYPE	CARPET	DRY BALCONY
3rd to 6th Floor, 8th to 11th Floor	3	2 BHK	69.50	2.10



BUILDING - A

TYPICAL FLOOR PLAN



Bldg No.	Floor	Flat No.	Type of apartment	Carpet area as per RERA	Enclosed Balcony	Niche	E.F.
A	1st Floor	5	2 BHK	63.24	8.39	2.61	8.35
		6	2 BHK	70.52	1.28	2.61	11.38
	2nd to 14th	1	3 BHK	80.06	10.22	6.54	8.34
	2nd to 14th	2	3 BHK	81.37	8.85	6.59	8.06
	2nd to 14th	3	2 BHK	70.52	1.28	2.61	11.38
	2nd to 14th	4	2 BHK	63.24	8.39	2.61	8.35

