

ODD FLOOR PLAN

BUILDING - B3

Apartment Nos.	101, 301, 501, 701, 901, 1101, 1301, 1501, 102, 302, 502, 702, 902, 1102, 1302, 1502	103, 303, 503, 703, 903, 1103, 1303, 1503, 104, 304, 504, 704, 904, 1104, 1304, 1504
Type	Type 1	Type 2
Apartment Type	3 BHK	3 BHK
Carpet Area	118.50	115.50
Terrace	8.40	9.70



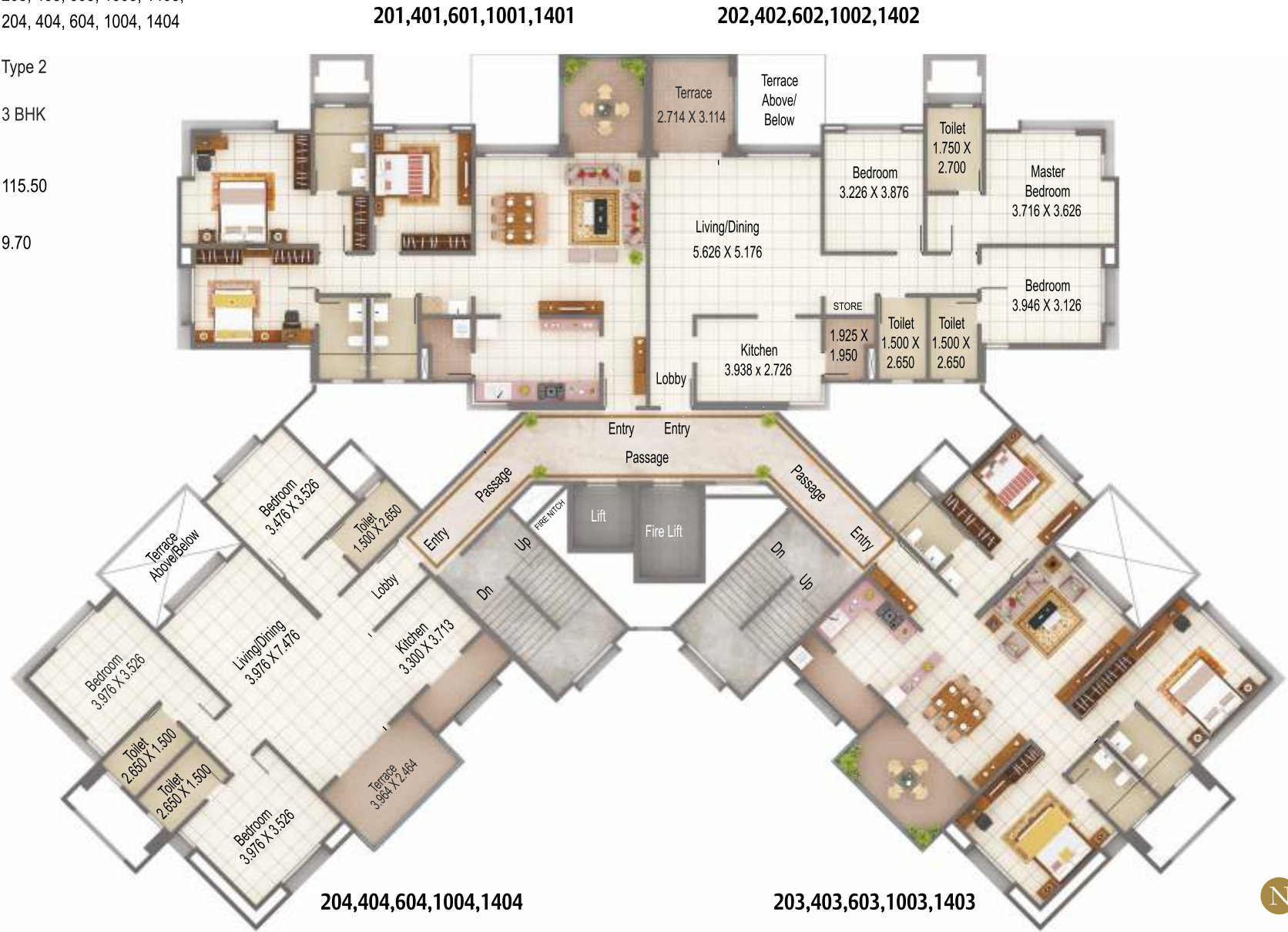
All dimensions are in Meter



EVEN FLOOR PLAN

BUILDING - B3

Apartment Nos.	201, 401, 601, 1001, 1401, 202, 402, 602, 1002, 1402	203, 403, 603, 1003, 1403, 204, 404, 604, 1004, 1404
Type	Type 3	Type 2
Apartment Type	3 BHK	3 BHK
Carpet Area	118.00	115.50
Terrace	8.20	9.70



All dimensions are in Meter



3 BHK APARTMENT - TYPE 1

BUILDING - B3

- A Living/Dining** : 5.626 X 5.176
- B Terrace** : 2.714 X 3.114
- C Kitchen** : 3.938 x 2.726
- D** : 1.925 X 1.950
- E Toilet** : 2.650 X 1.500
- F Bedroom** : 3.226 X 3.876
- G Master Bedroom** : 3.716 X 3.626
- H Toilet** : 2.700 X 1.750
- I Bedroom** : 3.946 X 3.126
- J Toilet** : 1.500 X 2.650



All dimensions are in Meter

3 BHK APARTMENT - TYPE 2

BUILDING - B3

- A** Living/Dining : 3.976 X 7.476
- B** Terrace : 3.964 X 2.464
- C** Kitchen : 3.300 X 3.713
- D** Toilet : 2.650 X 1.500
- E** Bedroom : 3.476 X 3.526
- F** Bedroom : 3.976 X 3.526
- G** Toilet : 2.650 X 1.500
- H** Bedroom : 3.976 X 3.526
- I** Toilet : 2.650 X 1.500



All dimensions are in Meter