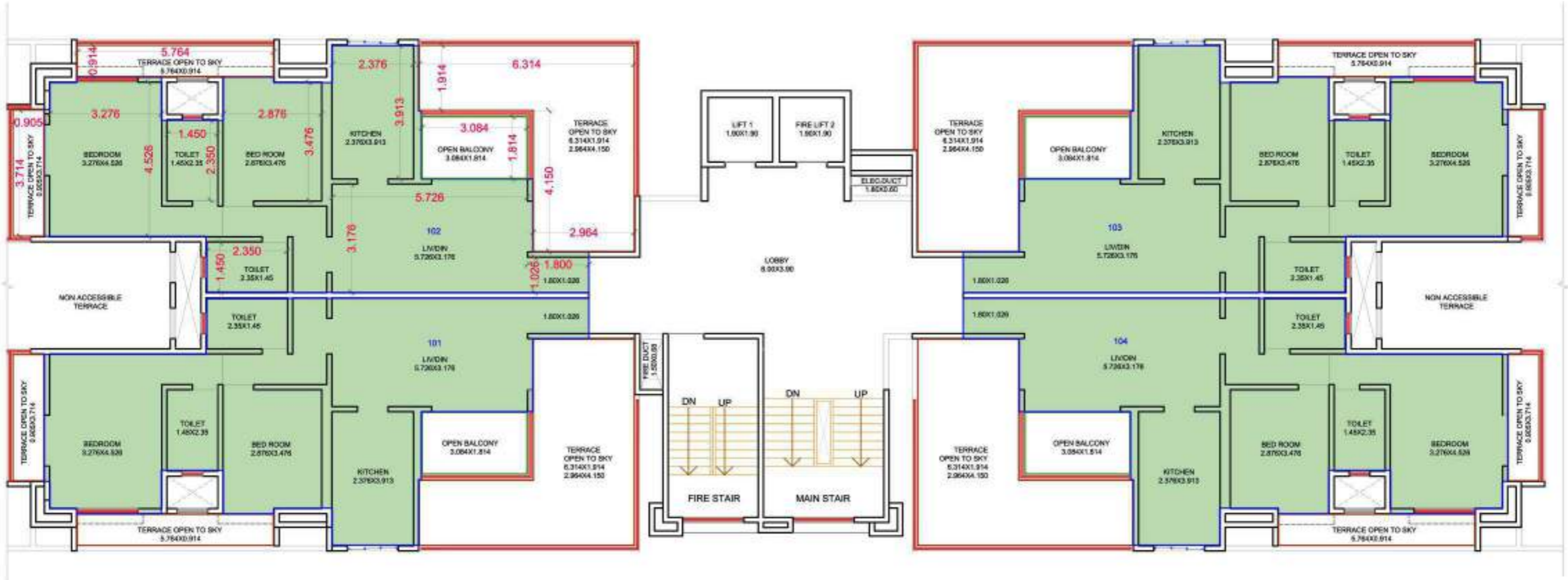


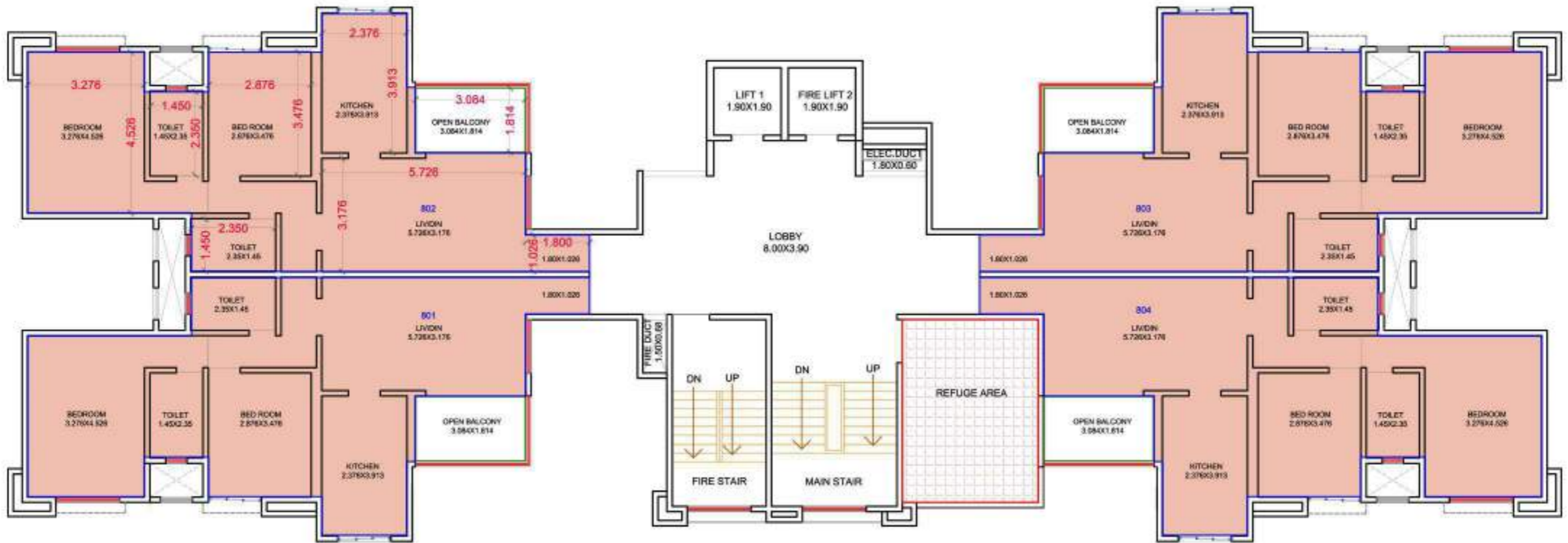
FIRST FLOOR PLAN - B2



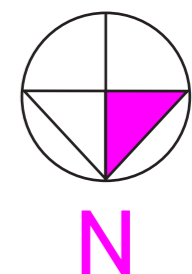
BLDG 'B2' 1ST FLOOR (AREA IN SQ.M.)			
UNIT PARTICULARS	CARPET	OPEN BAL.	TERRACE
101, 102, 103, 104	74.50	5.50	32.90



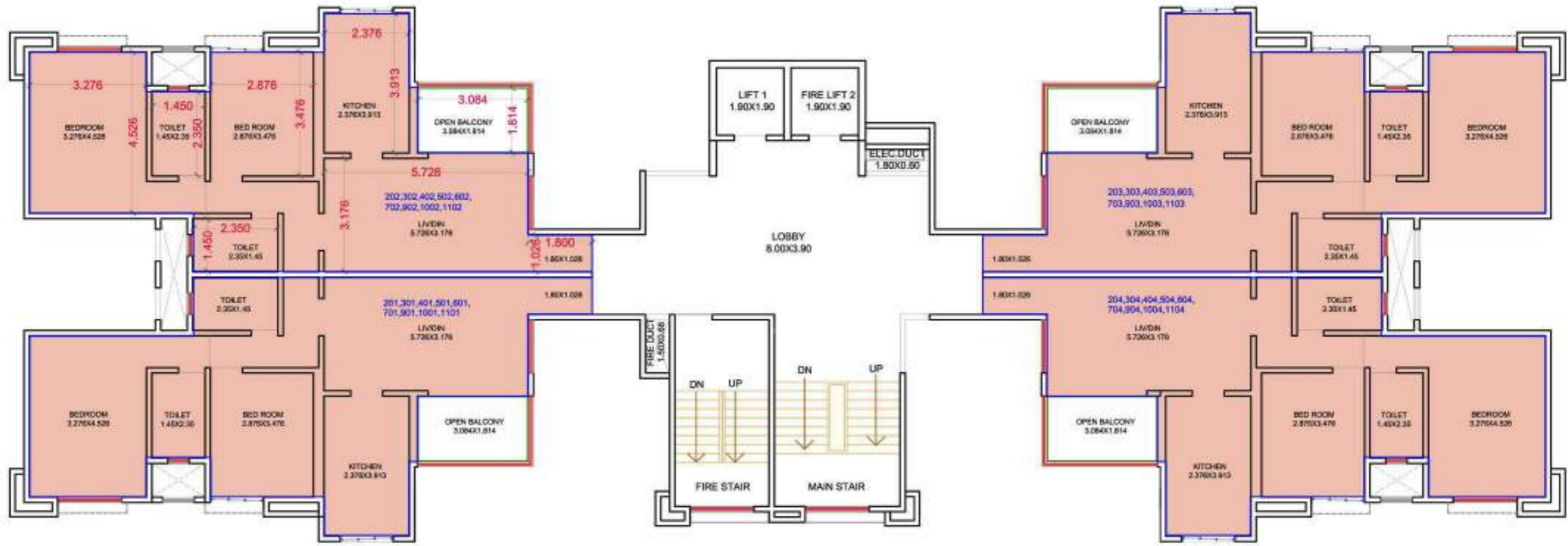
EIGHT FLOOR PLAN



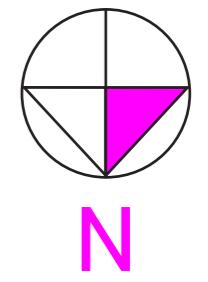
BLDG 'B2' 1ST FLOOR (AREA IN SQ.M.)			
UNIT PARTICULARS	CARPET	OPEN BAL.	TERRACE
801, 802, 803, 804	72.00	5.50	0.00



TYPICAL FLOOR PLAN (2ND TO 7TH, 9TH TO 11TH)



BLDG 'B2' TYP FLOOR (AREA IN SQ.M.)			
UNIT PARTICULARS	CARPET	OPEN BAL.	TERRACE
201, 202, 203, 204, 301, 302, 303, 304, 501, 502, 503, 504, 601, 602, 603, 604, 701, 702, 703, 704, 901, 902, 903, 904, 1001, 1002, 1003, 1004, 1101, 1102, 1103, 1104	72.00	5.50	0.00



2BHK CUT SECTION



A. Entrance Lobby - 5'11" x 3'4"

B. Living - 18'9" x 10'5"

C. Kitchen - 7'9" x 12'10"

D. Bedroom - 9'5" x 11'5"

E. Toilet - 7'9" x 4'9"

F. Bedroom - 10'9" x 14'10"

G. Toilet - 4'9" x 7'9"

H. Open Balcony - 10'1" x 5'11"